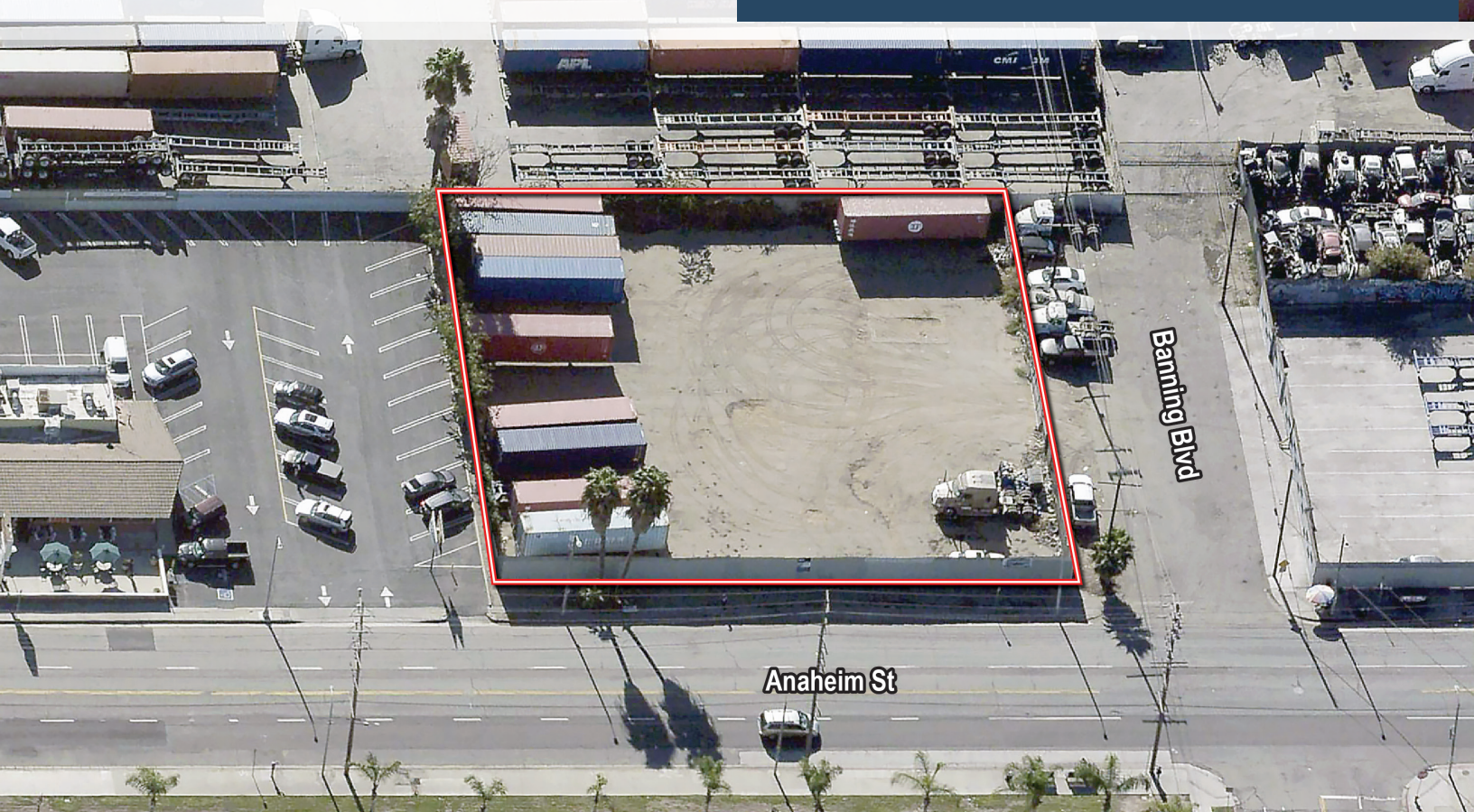


24,161 SF Lot

500-510 E. Anaheim St, Wilmington, CA 90744



FOR SUBLEASE

Property Highlights

- Heavy Weight Corridor Location
- Close Proximity to the Port of Los Angeles and Port of Long Beach
- Logistics and Distribution Surface Storage Site
- Easy Access to 110, 405 and 710 Freeways

Sublease Terms

Asking Rent: \$34,791.84 (\$1.44 PSF) Per Month

Term: Sublease thru October 31, 2025

Type: Gross

Property Features

Land Area: 24,161 SF
 Fenced Yard: Yes
 Paved Yard: Yes

Voit
 REAL ESTATE SERVICES

JOHN COSTA
 Senior Vice President
 Lic. #01940766
 949.610.5164
 jcosta@voitco.com

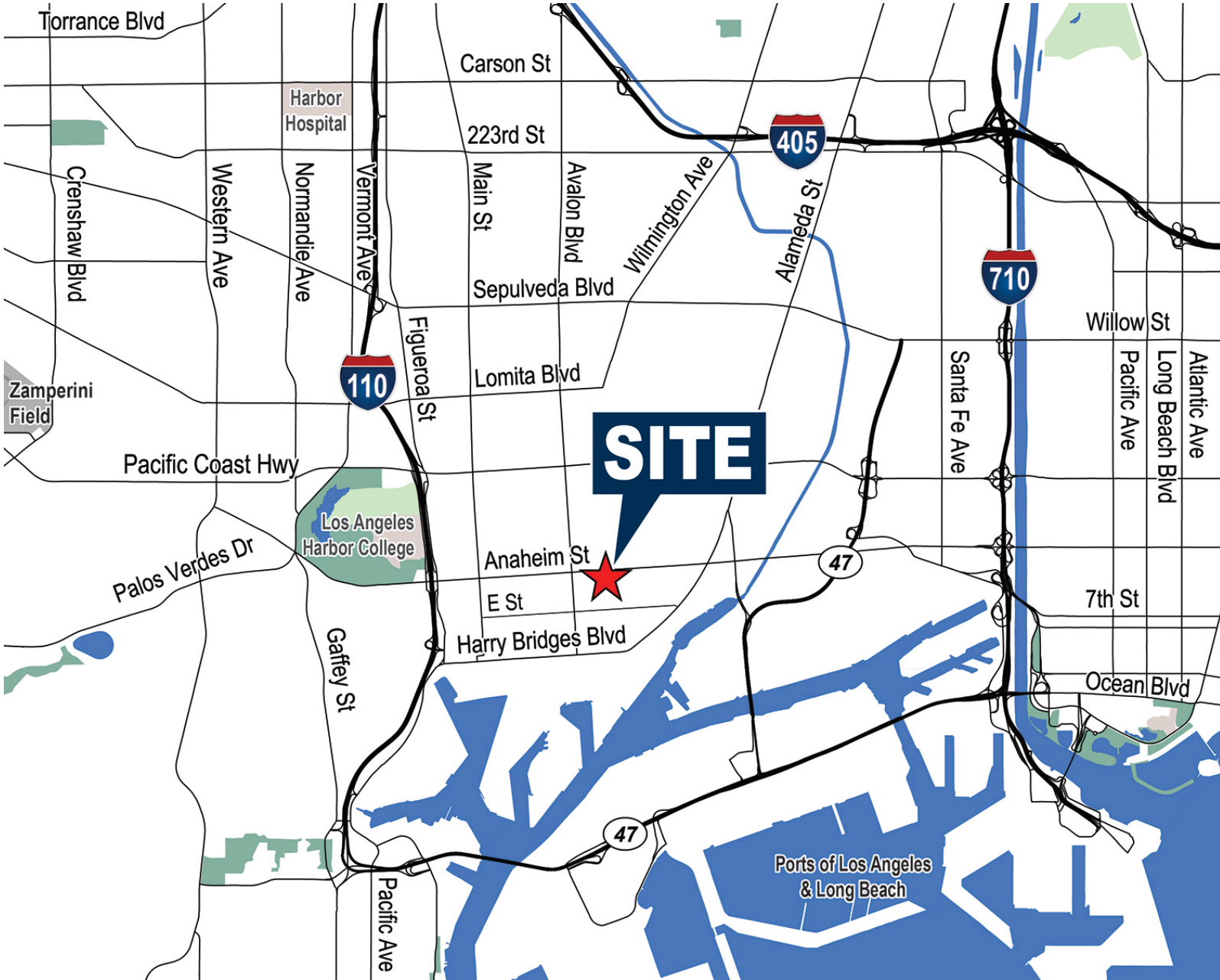
RYAN HUGUENARD
 Vice President
 Lic. #02033549
 310.819.7077
 rhuguehard@voitco.com

DAVID FULTS
 Senior Vice President
 Lic. #01242123
 424.329.7504
 dfults@voitco.com

BRIAN MCLOUGHLIN
 Senior Vice President
 Lic. #01268410
 424.329.7503
 bmcloughlin@voitco.com

For Sublease 24,161 SF Lot

500-510 E. Anaheim St, Wilmington, CA 90744



Voit

REAL ESTATE SERVICES

www.voitco.com

JOHN COSTA
Senior Vice President
Lic. #01940766
949.610.5164
jcosta@voitco.com

RYAN HUGUENARD
Vice President
Lic. #02033549
310.819.7077
rhuguenard@voitco.com

DAVID FULTS
Senior Vice President
Lic. #01242123
424.329.7504
dfults@voitco.com

BRIAN MCLOUGHLIN
Senior Vice President
Lic. #01268410
424.329.7503
bmcloughlin@voitco.com

1025 W. 190th St., Suite 350, Los Angeles, CA 90248 | 424.329.7500 • 424.233.0736 Fax • Lic #01991785

Licensed as Real Estate Salespersons by the CA Bur of Real Estate. The information contained herein has been obtained from sources we deem reliable. While we have no reason to doubt its accuracy, we do not guarantee it. ©2018 Voit Real Estate Services, Inc. All Rights Reserved.