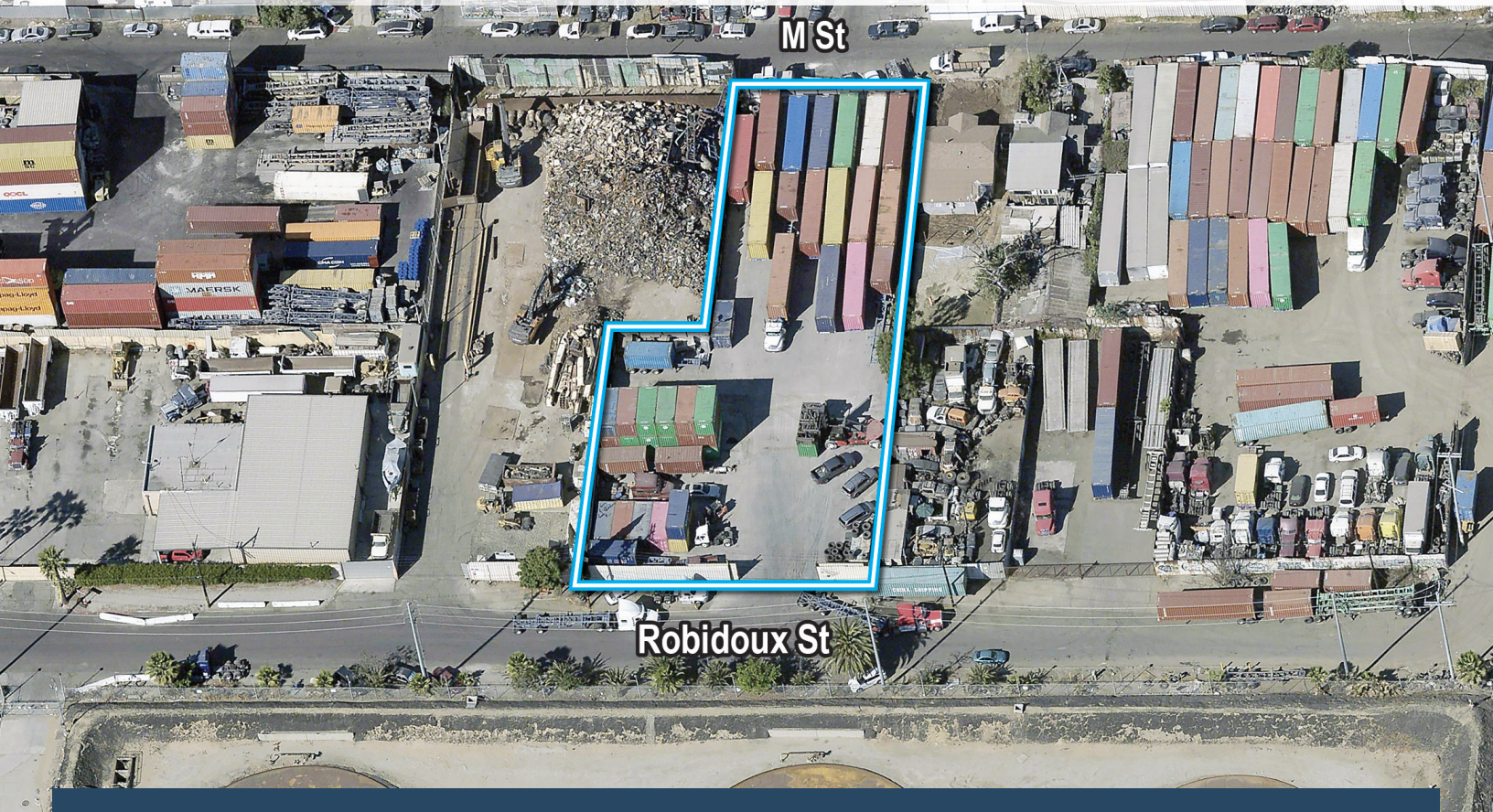


25,160 SF  
Industrial Land

1825 E. Robidoux Street, Los Angeles, CA 90744



## FOR SUBLEASE

### Property Highlights

- Truck and Container Yard
- Overweight Corridor
- Ideal Port Adjacent Location
- Fully Fenced and Paved

### Property Features

Land Area:	25,160 SF
Fenced:	Yes
Paved:	Yes
Gated:	Yes
Lighting:	Yes
Zoning:	LAM3

Asking Rate: \$30,000 (\$1.20 PSF) per month, gross

**Voit**  
REAL ESTATE SERVICES

**KEVIN FULTS**  
Vice President  
Lic. #02111820  
424-329-7508  
kfults@voitco.com

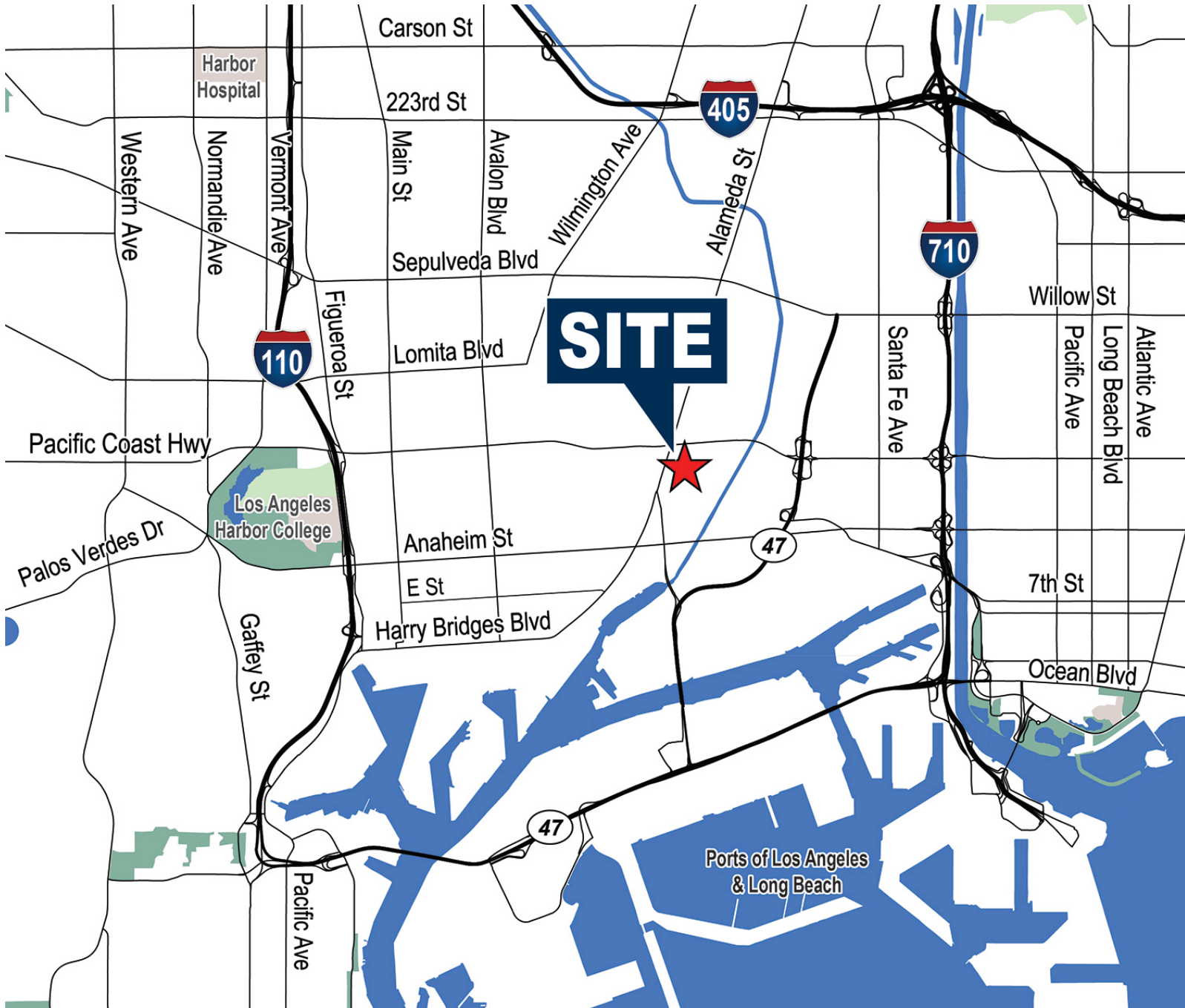
**BRIAN MCLOUGHLIN**  
Senior Vice President / Partner  
Lic. #01268410  
323-633-1074  
bmcloughlin@voitco.com

**DAVID FULTS**  
Senior Vice President / Partner  
Lic. #01242123  
323-791-0038  
dfults@voitco.com

**JOHN COSTA**  
Senior Vice President  
Lic. #01940766  
949-610-5164  
jcosta@voitco.com

# For Sublease 25,160 SF Industrial Land

1825 E. Robidoux Street, Los Angeles, CA 90744



## **Voit**

REAL ESTATE SERVICES

[www.voitco.com](http://www.voitco.com)

### **KEVIN FULTS**

Vice President  
Lic. #02111820  
424-329-7508

[kfults@voitco.com](mailto:kfults@voitco.com)

### **BRIAN MCLOUGHLIN**

Senior Vice President / Partner  
Lic. #01268410  
323-633-1074

[bmcloughlin@voitco.com](mailto:bmcloughlin@voitco.com)

### **DAVID FULTS**

Senior Vice President / Partner  
Lic. #01242123  
323-791-0038

[dfults@voitco.com](mailto:dfults@voitco.com)

### **JOHN COSTA**

Senior Vice President  
Lic. #01940766  
949-610-5164

[jcosta@voitco.com](mailto:jcosta@voitco.com)

1025 W. 190th St., Suite 350, Los Angeles, CA 90248 | 424.329.7500 • 424.233.0736 Fax • Lic #01991785

Licensed as Real Estate Salespersons by the CA Bur of Real Estate. The information contained herein has been obtained from sources we deem reliable. While we have no reason to doubt its accuracy, we do not guarantee it. ©2017 Voit Real Estate Services, Inc. All Rights Reserved.